



## HOMEWORK POLICY

Date of Last Review	<a href="#">June 2024</a>
Date of Next Review	<a href="#">June 2025</a>
Review period	1 Year

*Tayyibah Girls School is committed to safeguarding and promoting the welfare of children and young people and expects all staff and volunteers to share this commitment.*

## **HOMEWORK POLICY**

**A homework policy is a partnership agreement between the school, the pupil and the parent/guardian. Therefore, in developing this, it is important that the school lays out its expectations and ensures parents/guardians are clear about what these expectations are.** Homework is an essential part of our school approach to helping students learn, think and work effectively.

### **Purposes**

- Encouraging pupils to develop the skills, confidence and motivation needed to study effectively as independent learners.
- Consolidating and reinforcing understanding, skills and attributes developed at school.
- Extending school learning through a range of learning activities sustainable in and beyond the classroom environment.
- Encouraging and sustaining the involvement of parents', carers and other adults in the management of pupils learning

### **Amount and types of Homework**

Regular homework should be set relating to the topic being taught in class as means of consolidating or extending classwork. Excessive and unnecessary homework is to be avoided.

- Teachers are responsible for ensuring that homework is set and marked regularly.
- Homework tasks should be set on Google Classroom for parents and pupils to view.
- Activities set should be varied and might include reading, learning curriculum content (knowledge), annotating texts, revision tasks or problem solving.
- Homework should be paper-based and use of internet is strongly discouraged, to limit screen time and encourage independent learning.
- All pupils are expected to complete their homework, no matter what their level of ability.

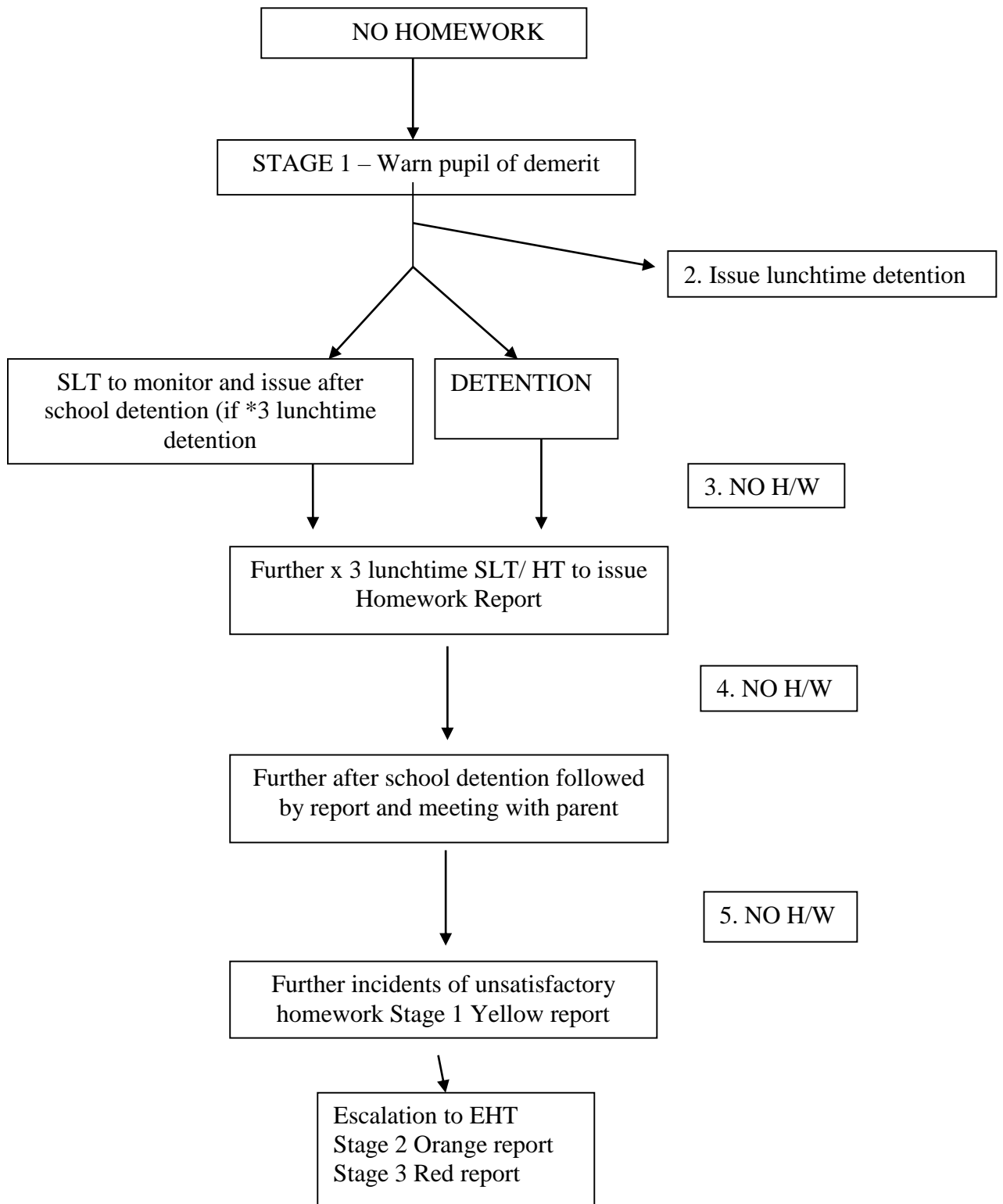
### **Marking Homework**

Homework should be marked, checked and returned to pupils in accordance with the school marking and assessment policy.

### **Procedures for pupils not doing homework**

Homework is compulsory for all students. If a pupil fails to do homework teachers should use the procedures laid out in the flow chart below:

## Flow chart for No Homework



If after the second detention a student continues to fail in completing HW, she should be enrolled for mandatory after school homework sessions. Parents will be informed of the sessions and cost in advance.